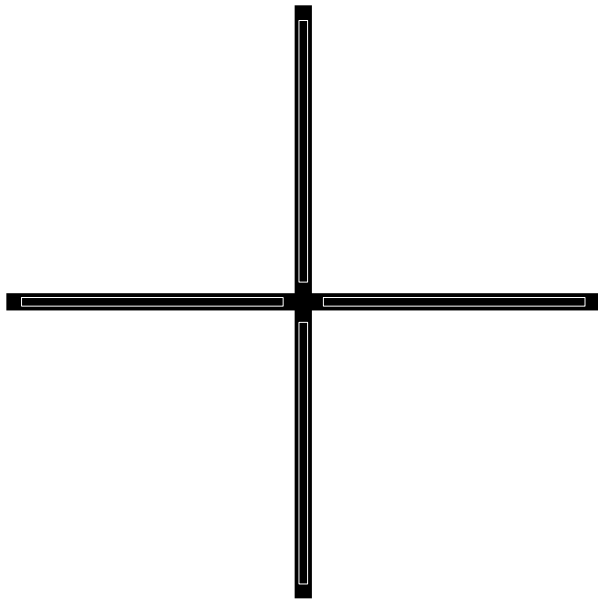


2x4 Plus Pendant Collection

Installation and Product Guide
36", 48", and 60" Pendants



AlexAllen
Studio

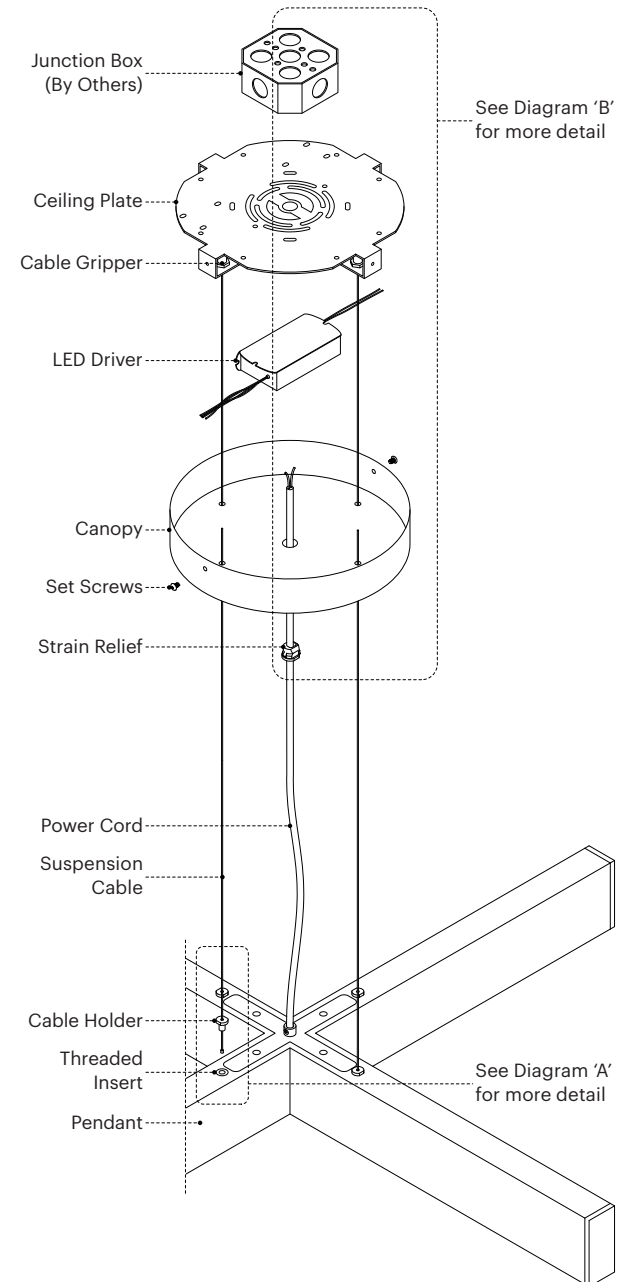
CAUTION:

Electric shock risk. Turn off electrical power at breaker before beginning installation. We recommend this product be installed by a qualified electrician only.

INSTALLATION INSTRUCTIONS

- (1) Attach **Ceiling Plate** to ceiling **Junction Box** with junction box screws.
- (2) Unscrew the **Cable Holders** from **Threaded Inserts** on the pendant. Feed one **Suspension Cable** through the base of the **Cable Holder** till it rests on the end stopper. Screw the **Cable Holder** back into the **Threaded Insert**, locking the end stopper in place. Repeat for all Cable Holders. See 'Diagram A' on back of instruction booklet for more detail.
- (3) Feed the four **Suspension Cables** through the holes in the bottom of the **Canopy** and into the **Cable Grippers** in the **Ceiling Plate**. Continue feeding Suspension Cables through the cable grippers until the fixture is level and at the desired height. Trim the end of the cable with approved cable cutters. See 'Diagram B' box '1' on back of instruction booklet for more detail.
- (4) Feed the end of the **Power Cord** into the large center hole in **Canopy** and trim, leaving some extra length to connect to driver. 'Diagram B' box '2' on back of instruction booklet for more detail.
- (5) Connect **Power Cord** electrical wire ends to **LED Driver** output (Red, Blue). Connect the driver input cables to the line voltage input. 24V DC ONLY!
Red Wire: LED+. Blue Wire: LED-.
Purple Wire: Dim+. Pink Wire: Dim-.
Black Wire - Line. White Wire - Neutral.
- (6) Slide the **Canopy** up the **Suspension Cables** to the ceiling and secure it using the two **Set Screws**. See Diagram 'A' box '3' on back of instruction booklet for more detail.
- (7) Position **Strain Relief** onto **Power Cord** at the desired length and close with pliers. Push **Strain Relief** into second hole on Feed Side Canopy to finish installation.

INSTALLATION DIAGRAMS



CARE INSTRUCTIONS

For removing oils from metal surfaces after handling, or for removing moisture, grease, or dirt, wipe or rub lightly with a dry microfiber or cotton cloth.

Do not use any abrasive or acidic household cleaning products on product surfaces.

For the best maintenance of the product, protect against sunlight, heat, or any other natural elements.

DIMMER COMPATIBILITY

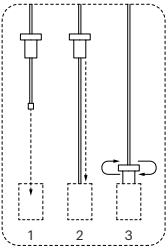
- LUTRON:**
CASETA WIRELESS PD-6WCL
DIVA CL DVCL-153P-WH
DIVA ELV DVELV-303P
DIVA 0-10V DVSTV
DIVA 0-10V DDTV
HOME WORKS HQRD-6A
HOME WORKS HQRD-6NA
MRF2-6ELV-120-WH
MAESTRO MRF2-6ELV-120-WH
MAESTRO RF RRA-6D
MAESTRO RF RRA-6NA
MAESTRO RF RRA-6ND
MAESTRO MAELV-600
MAESTRO MSCELV-600M
MAESTRO CL MACL-153MH
MAESTRO IR MIRELV-600
MAESTRO WIRELESS MRF2-6ELV-120
NOVA T NTELV-600-WH
NOVA NVELV-600-WH
NOVA T NTELV-300
SKYLARK SELV-600-WH
SKYLARK CONTOUR CTELV-303P
VIERTI VTELV-600-XXX

- LEVITON:**
6615
6672
6674/IPLO6
IPE04
IPI06
VP106
VPE04
VPM06
VRE04
VRM10
IP710

- CONT.**
DS710
DD710
- CRESTRON:**
CLW-DIMSWEX-P
P-DIMEX
GLX-DIM6
GLXX-2DIM8
CLW-DELVEX-E
CLW-DELVEX-P
CLX-2DIMFLV8
DIN-4DIMFLV4
CLS-EXP-DIMFLV
GLX-DIMFLV8
SELV-300P
CLS-C6
CLS-C6M
CLS-C6EX
CLS-C6MEX
CLS-C6MRF
CLS-C6RF
CLS-EXP-DIM
CLS-EXP-DIMU
CLX-1DIM4
CLX-1DIM8
CLX-2DIM2
CLX-2DIM8
CLX-1DELV4
DIN-1DIM4
DIN-1DIMU4
CLW-DIMEX-E
CLW-DIMEX-P
CLW-DIMSWEX-E
- FEIT**
BPMIMSMART/2

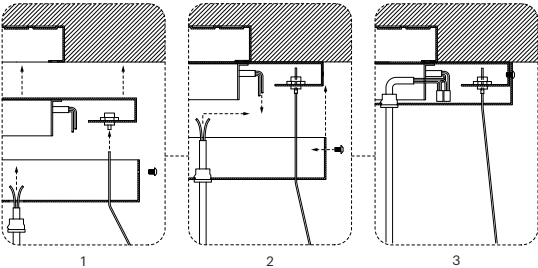
INSTALLATION DIAGRAMS - CONTINUED

Diagram A



- 1:** Feed one Suspension Cable through the base of the Cable Holder till it rests on the end stopper.
- 2/3:** Screw the Cable Holder back into the Threaded Insert, locking the end stopper in place.

Diagram B



- 1:** Attach Ceiling Plate to ceiling Junction Box with junction box screws. Feed the four Suspension Cables through the holes in the bottom of the Canopy and into the Cable Grippers in the Ceiling Plate.
- 2:** Feed the end of the Power Cord into the large center hole in Canopy and trim, leaving some extra length to connect to driver.
- 3:** Slide the Canopy up the Suspension Cables to the ceiling and secure it using the two Set Screws. Position Strain Relief onto Power Cord at the desired length and close with pliers. Push Strain Relief into second hole on Feed Side Canopy to finish installation.