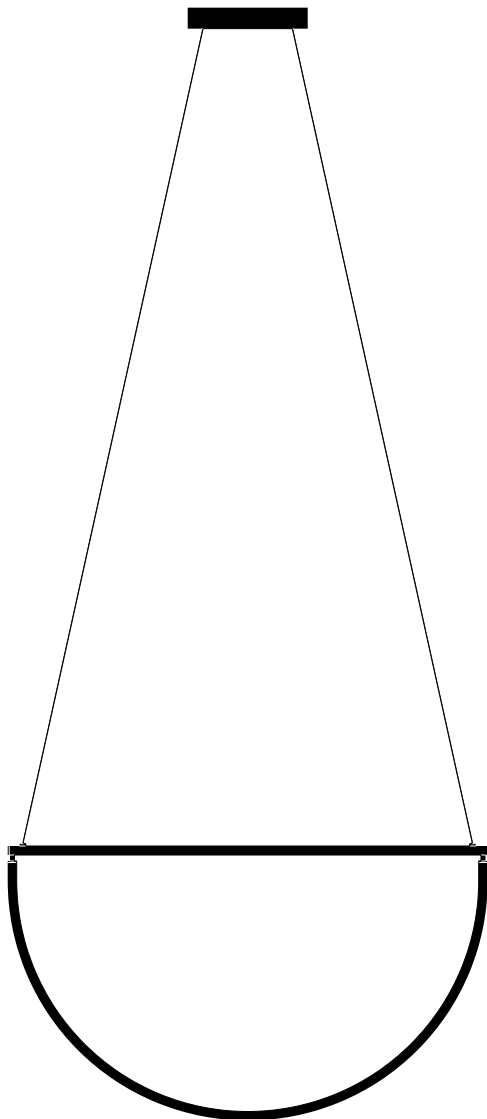


Chord Collection

Installation and Product Guide
30", 36", 40", 48", and 52" Pendants and Convoy



CAUTION:

Electric shock risk. Turn off electrical power at breaker before beginning installation. We recommend this product be installed by a qualified electrician only.

INSTALLATION INSTRUCTIONS

(1) Attach **Ceiling Plate** to ceiling **Junction Box** with junction box screws.

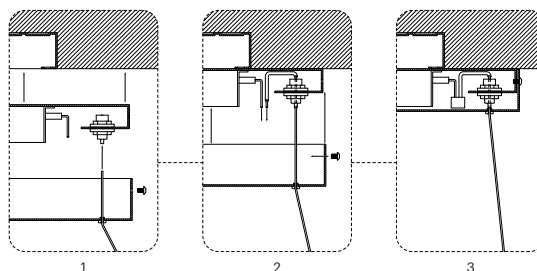
(2) Remove Red+ and Black- **Cable Insulators** from cables and save for step 3 (keep note of colors through install). Feed the **Suspension Cables** through the holes in the bottom of the **Canopy** and into the **Cable Grippers** in the **Ceiling Plate**. Continue feeding Suspension Cables through the cable grippers until the fixture is level and at the desired height. Tighten the cable gripper lock nuts after final adjustments. See Diagram 'A' box '1' below for more detail

(3) Slide the Red+ and Black- **Cable Insulators** along the excess **Conductive Cables** until they reach the top of the cable grippers. Ensure the cable insulators cover the conductive cables so they don't touch the metal interior of the canopy or ceiling plate. Trim cables to appropriate length. See Diagram 'A' box '2' below for more detail.

(4) Connect the **Red+ Conductive Suspension Cable** to the Red+ output cable on the LED driver. Connect the **Black- Conductive Suspension Cable** to the Black- driver output. Connect the driver input cables to the line voltage input.

(5) Slide the **Canopy** up the **Suspension Cables** to the ceiling and secure it using the two **Set Screws**. See Diagram 'A' box '3' below for more detail.

Diagram A



See back of instruction book for installation photographs

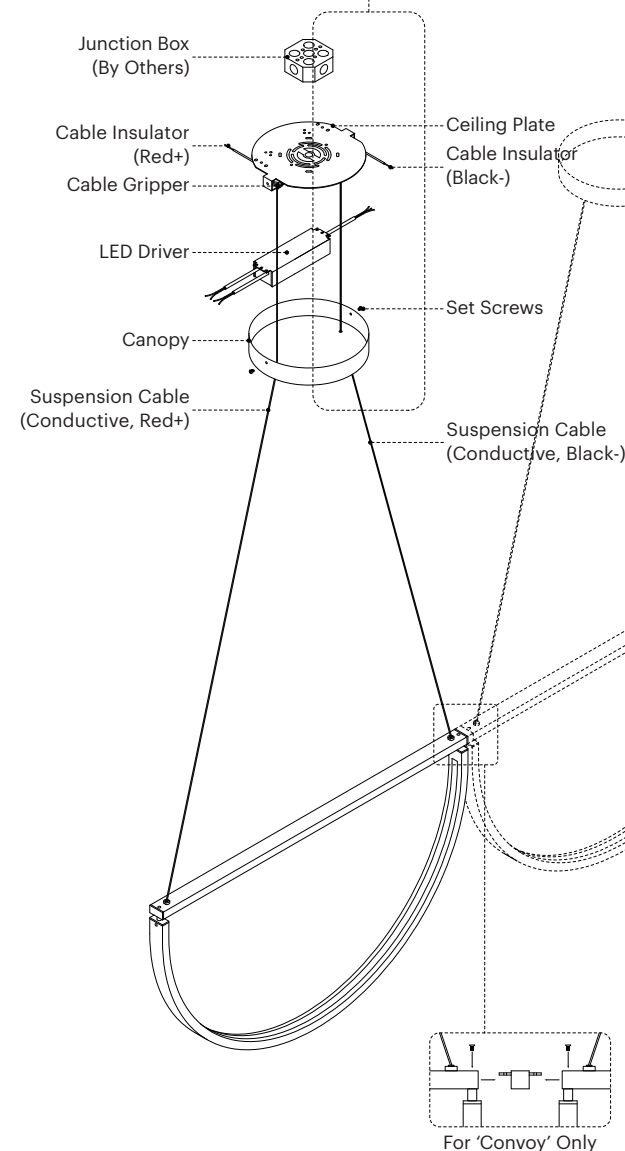


Flexible LED Module (>60,000 Hour Lifespan)
Universal Voltage 120V-277V, 50Hz/60Hz



INSTALLATION DIAGRAMS

See Diagram 'A' for more detail



DIMMER COMPATIBILITY

LUTRON:
CASETA WIRELESS PD-6WCL
DIVA CL DVCL-153P-WH
DIVA ELV DVELV-303P
DIVA 0-10V DVSTV
DIVA 0-10V DVTV
HOME WORKS HQRD-6A
HOME WORKS HQRD-6NA
MRF2-6ELV-120-WH
MAESTRO MRF2-6ELV-120-WH
MAESTRO RF RRA-6D
MAESTRO RF RRA-6NA
MAESTRO RF RRA-6ND
MAESTRO MAELV-600
MAESTRO MSCELV-600M
MAESTRO CL MACL-153MH
MAESTRO IR MIRELV-600
MAESTRO WIRELESS MRF2-6ELV-120
NOVA T NTELV-600-WH
NOVA NVELV-600-WH
NOVA T NTELV-300
SKYLARK SELV-600-WH
SKYLARK CONTOUR CTELV-303P
VIERTI VTELV-600-XXX

LEVITON:
6615
6672
6674/IPLO6
IPE04
IPI06
VP106
VPE04
VPM06
VRE04
VRM10
IP710

AlexAllen Studio LLC
T: +1 (917) 909-0405
info@alexallenstudio.com
www.alexallenstudio.com

CONT.
DS710
DD710

CRESTRON:
CLW-DIMSWEX-P
P-DIMEX
GLX-DIM6
GLXX-2DIM8
CLW-DELVEX-E
CLW-DELVEX-P
CLX-2DIMFLV8
DIN-4DIMFLV4
CLS-EXP-DIMFLV
GLX-DIMFLV8
SELV-300P
CLS-C6
CLS-C6M
CLS-C6EX
CLS-C6MEX
CLS-C6MRF
CLS-C6RF
CLS-EXP-DIM
CLS-EXP-DIMU
CLX-1DIM4
CLX-1DIM8
CLX-2DIM2
CLX-2DIM8
CLX-1DELV4
DIN-1DIM4
DIN-1DIMU4
CLW-DIMEX-E
CLW-DIMEX-P
CLW-DIMSWEX-E

FEIT
BPMIMSMART/2

Version: July 1, 2025

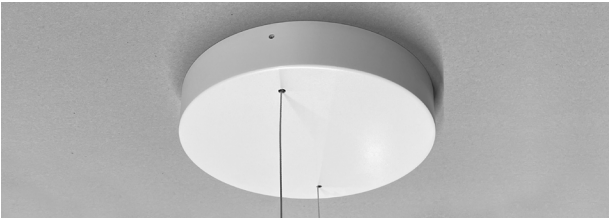
INSTALLATION PHOTOGRAPHS



(1) After installing **Ceiling Plate**, feed the **Suspension Cables** through the holes in the bottom of the **Canopy** and into the **Cable Grippers** in the **Ceiling Plate** until fixture is level and at the desired height. Tighten the cable gripper lock nuts after final adjustments.

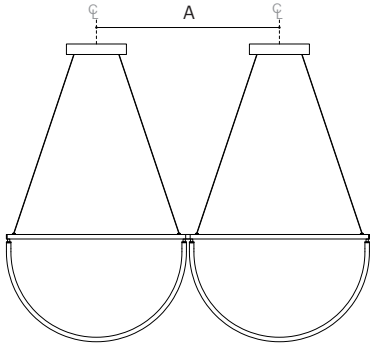


(2) Slide the Red+ and Black- **Cable Insulators** along the excess **Conductive Cables** until they reach the top of the cable grippers. Ensure the cable insulators cover the conductive cables so they don't touch the metal interior of the canopy or ceiling plate. Connect the Red+ and Black- Cable Insulators to the corresponding Red+ and Black- Output wires on the driver. Connect the driver input cables to the line voltage input.



(3) After connecting wires, slide the **Canopy** up the **Suspension Cables** to the ceiling. Make sure any loose cables or wires are tucked inside the canopy and confirm that the conductive suspension cables are not touching any metal surfaces on the interior. Secure the **Canopy** using **Set Screws** provided.

CHORD CONVOY INSTALLATION



Fixture Size

30" Pendants
36" Pendants
40" Pendants
48" Pendants
52" Pendants

Distance 'A'

A = 30.5 in / 77.47 cm
A = 36.5 in / 92.71 cm
A = 40.5 in / 102.87 cm
A = 48.5 in / 123.19 cm
A = 53 in / 134.62 cm

(1) Align and install each additional ceiling plate using the mounting distances above for matching sizes. There should be 3/4" between each fixture to accommodate the metal connector.

(2) When ceiling plates are installed follow standard Chord Pendant installation instructions.

(3) Slide convoy connector into the ends of both chords and secure using provided screws.

CARE INSTRUCTIONS

For removing oils from metal surfaces after handling, or for removing moisture, grease, or dirt, wipe or rub lightly with a dry microfiber or cotton cloth.

Do not use any abrasive or acidic household cleaning products on product surfaces.

For the best maintenance of the product, protect against sunlight, heat, or any other natural elements.